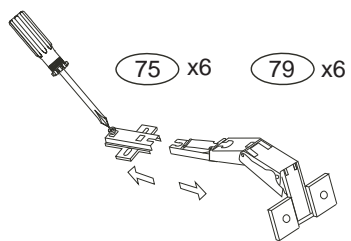
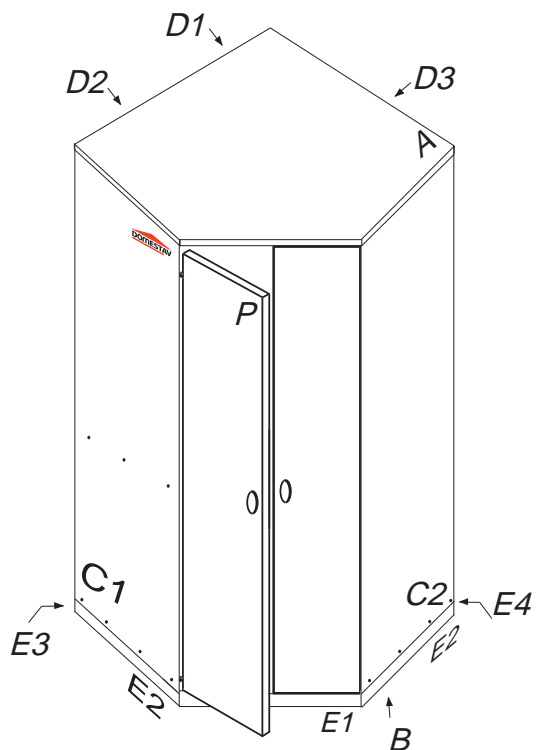


DOMINO

D 508

1100x576x1890

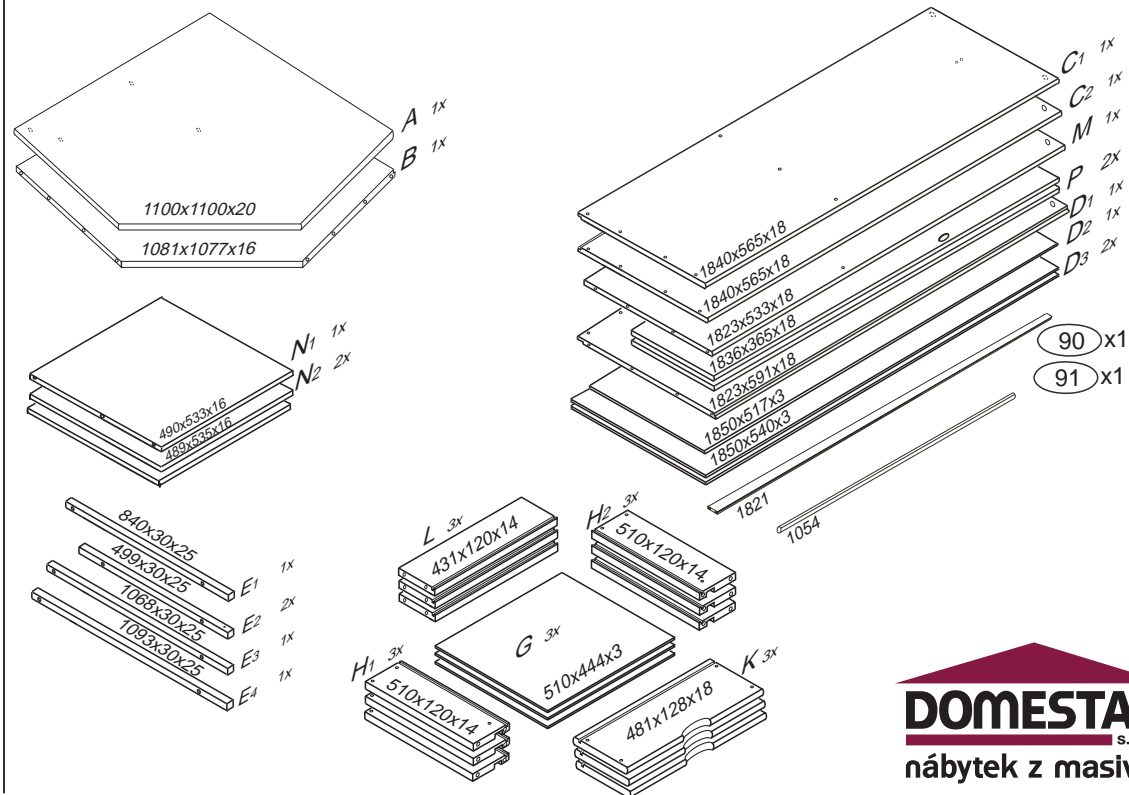


Kolíky vždy narazte nejprve do otvorů ve hranách dílců, je nutné je zarazit se stejným přesahem. V případě, že některý kolík přesahuje, je nutné jej zakrátit. Dílce srážejte kladivem pouze přes dřevěnou podložku.

olejová úprava výrobku vykazuje po určitou dobu specifickou vůni, která není zdravotně závadná a časem vyprchá. Lakované, mořené a olejované výrobky otírat navlhčenou textilií a vytřít do sucha. Lze použít i Pronto.

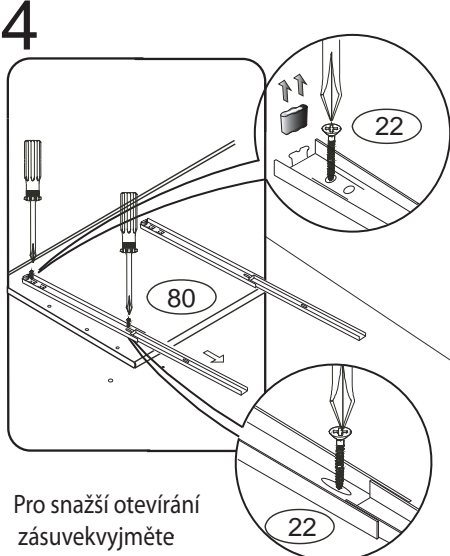
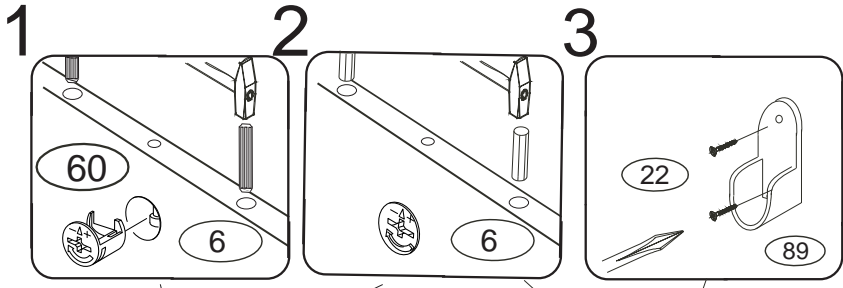
1/4

	3 x1 3mm	4 x1 4mm	6 x6 8x35mm	21 x4 3x20mm	22 x28 3,5x16mm	23 x18 3,5x12mm
	29 x15 4x40mm	33 x4 3x12mm	43 x12 EU 6x16mm	60 x16 15mm	61 x28 DU 2	67 x16
	68 x12 12mm	71 x29 7x50mm	73 x12 5x40mm	80+81 x3 500mm	75 79 x6	
	85 x12	87 x11	88 x2	89 x2	92 x70 1,4x20mm	

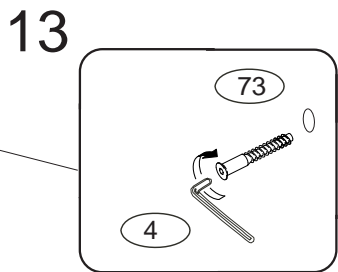
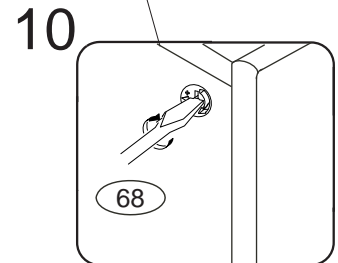
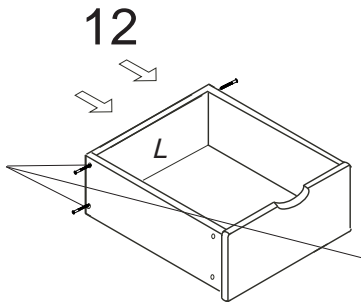
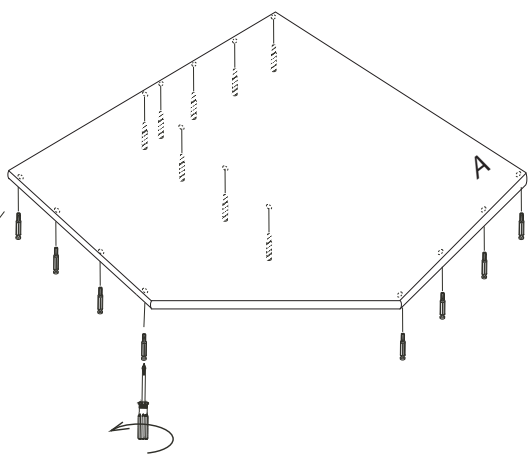
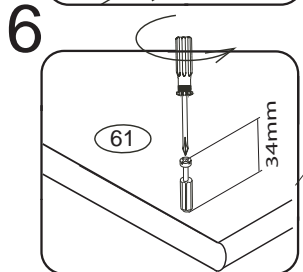
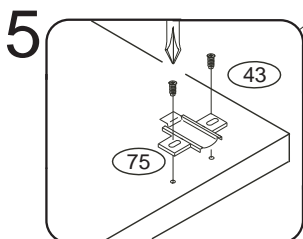
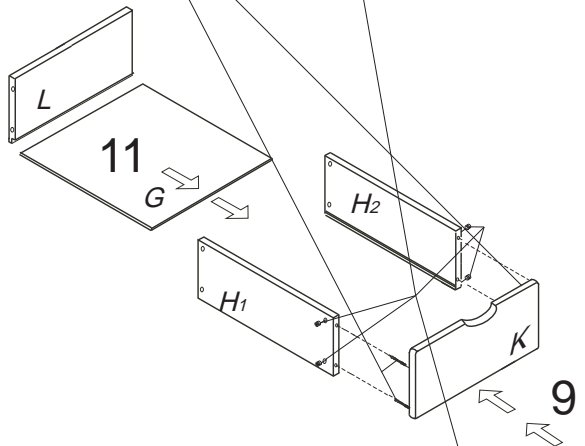
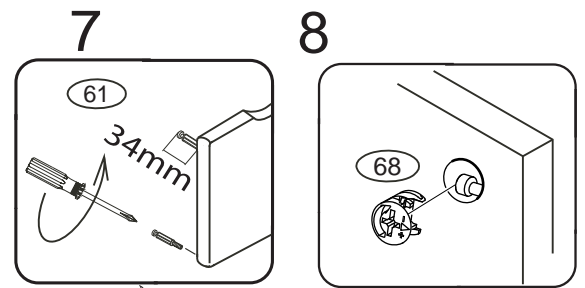
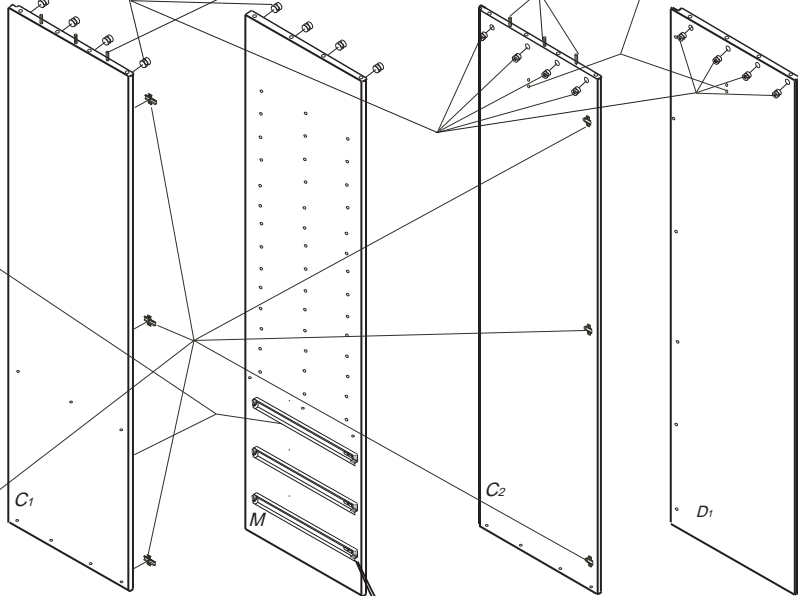


D 508

2/4



Pro snazší otevírání zásuvek vyjměte gumový doraz pojezdu.



D 508

15

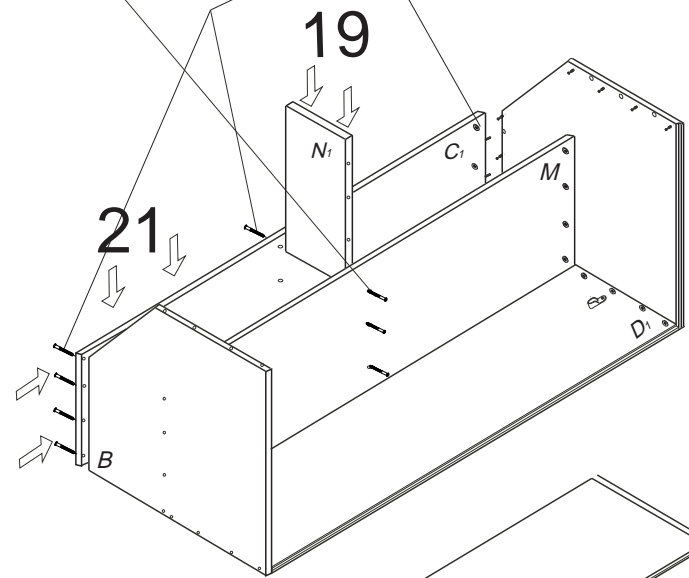
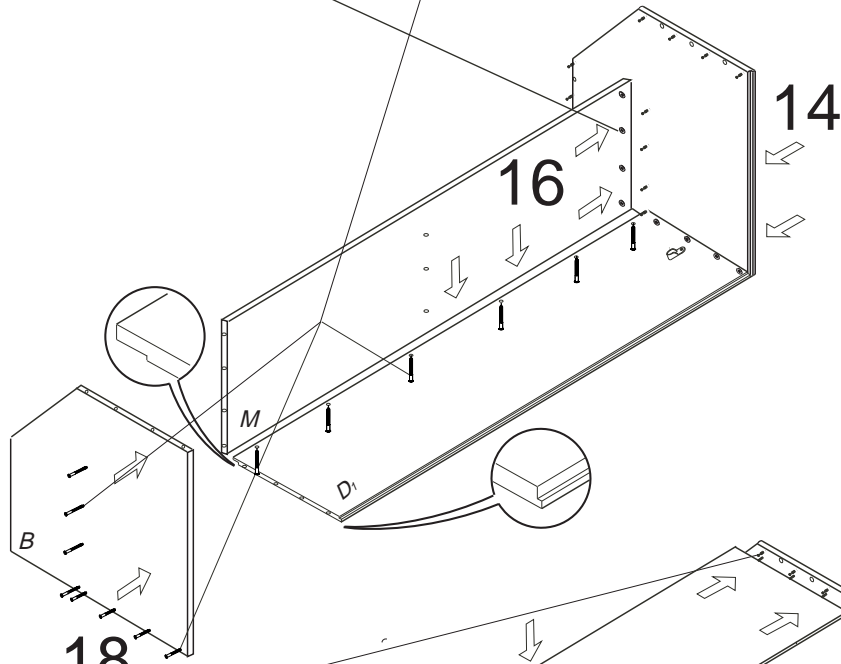
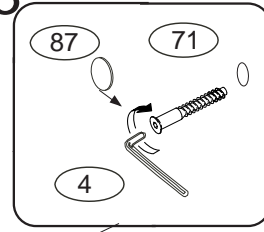
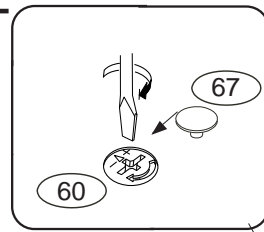
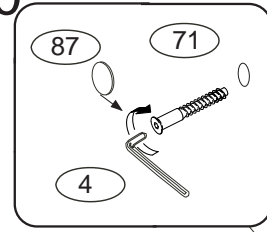
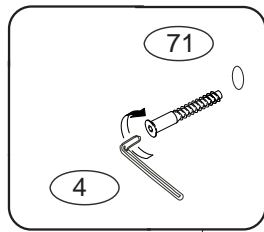
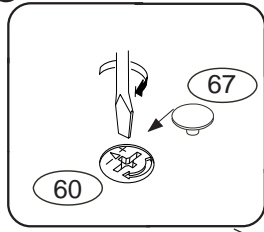
17

20

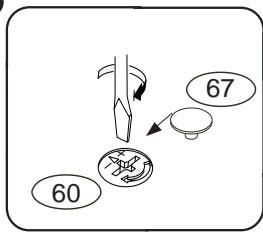
22

23

3/4

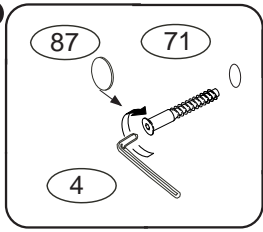


25

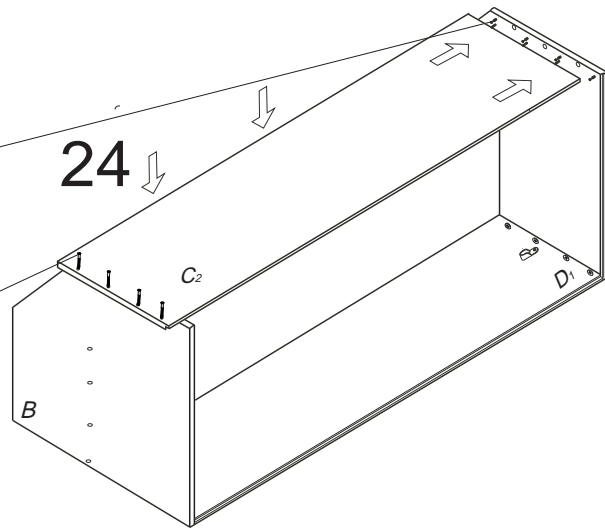


18

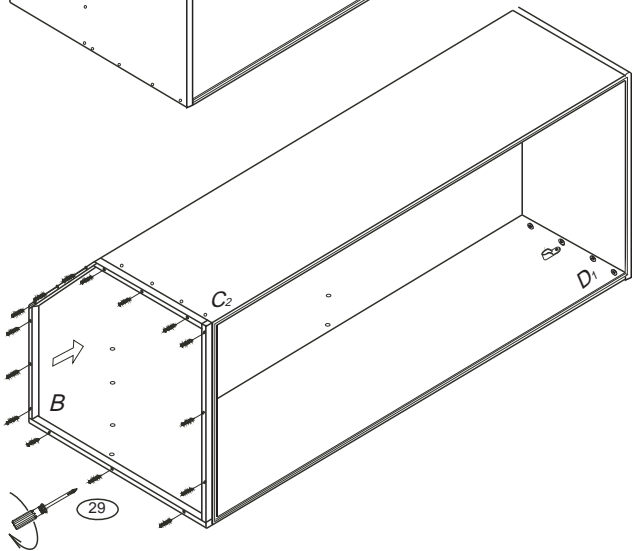
26



24



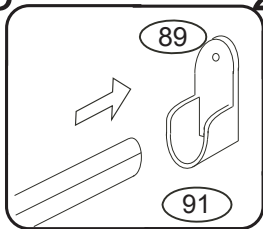
27



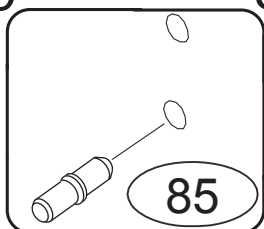
D 508

4/4

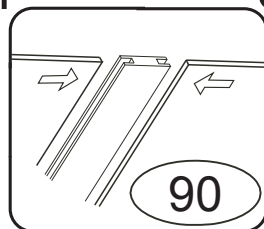
28



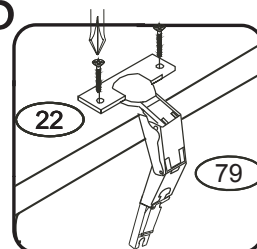
29



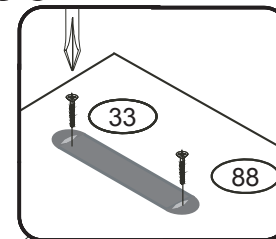
31



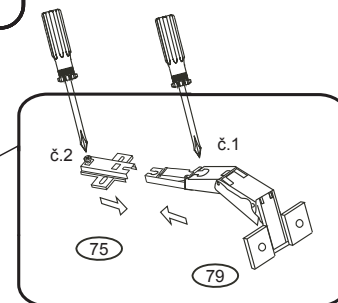
35



36



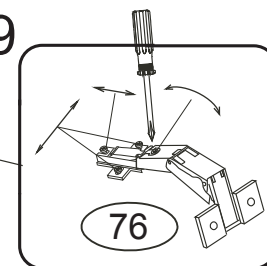
38



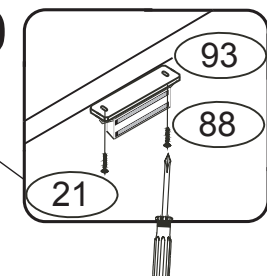
Montáž závěsu 175 stupňů s podložkou

- 1) Pant se skládá ze dvou částí. Menší díl přišroubovaný na bok skříně (bod 3), větší na dveře (bod 35).
- 2) Oba díly závěsu zasadíte do sebe tak, aby byl závěs celkově co největší. Dveře by měly zůstat co nejvíc vystrčené ven. Snažte se, aby se díly co nejméně překrývaly, maximálně aby byly zároveň (je nutné závěsy doladit tak, aby šly otvírat zásuvky).
- 3) Po překrytí dílů utáhněte šroub č. 2 tak, aby mezi dveřmi nebyla skulina.
- 4) Nakonec upravte polohu šroubu č. 1.

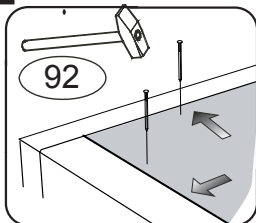
39



40



32



34

